

EDGE 850

System Specifications

PRINT SPEED	Up to 9.14 meters/min (30 ft/min)
PRINT TECHNOLOGY	Single Pass 4 Color LED (CMYK)
PRINTER PROCESSOR ¹	533 MHz
MEDIA WIDTH	Minimum: 3.0 inches (76.2 mm) Maximum: 8.5 inches (216 mm)
PRINT WIDTH	Minimum: 3.0 inches (76.2 mm) Maximum: 8.24 inches (209.3 mm)
PRINT LENGTH	Up to 213.4 meters (700 ft)
SUBSTRATE TYPES ²	Die Cut Label Stock Kiss Cut Label Stock Non Die Cut Label Stock Tag Stock
PRINT QUALITY	1200 x 600 dpi
TONER SUPPLIES ³	CMY - 11,500 pages @ 5% K - 11,000 pages @ 5% (Rated according to ISO/IEC 19798 guidelines)
DRUM SUPPLIES ⁴	CMYK - 30,000 pages @ 5% (Rated according to ISO/IEC 19798 guidelines)
FEEDER SYSTEM	Input roll maximum diameter: 8 inches (203 mm) Core inside diameter: 3 inches (76.2 mm) Maximum input roll weight: 14 lbs (6.35 kg) Cut on the fly, auto cut Auto page width registration Front Panel LCD interface Web management system torque Auto adjusting form synchronization
REWINDER SYSTEM	Output roll maximum diameter: 8 inches (203 mm) Core inside diameter: 3.0 inches (76.2 mm) Maximum output roll weight: 14 lbs (6.35 kg)



DIMENSIONS (H x W x D)	Printer & Feeder: 26" x 17.1" x 21.5" (660 mm x 434 mm x 546 mm) Rewinder: 16" x 19.75" x 19" (406 mm x 502 mm x 483 mm)
WEIGHT	Printer & Feeder: 110 lbs (49.9 kg) Rewinder: 27.65 lbs (12.54 kg)
OPERATING ENVIRONMENT	Temperature: 10°C to 20°C (50 to 89.6°F) Humidity: 20 to 60% RH
POWER (Typical)	110 - 127 VAC, 50/60 Hz @ 1150W 220 - 240 VAC, 50/60 Hz @ 1150W
CERTIFICATIONS	FCC Class A, CE, cTUVus, CCC
WARRANTY	1 year - Parts & Labour

1. Published performance results based on laboratory testing. Individual results may vary.
2. This product is designed and engineered to operate only with genuine iSys Label consumables and certified media substrates. Please contact iSys for the most current Certified Media List of substrates available.
3. Letter-size sheets at 5% coverage. Printer ships with a 7,500 page set of starter toners.
4. Based on 500 cut-sheet pages/job.
iSys Label reserves the right to change product specifications without notice. Trademarks are the property of their respective manufacturers. ©2013 Copyright, iSys Label. All Rights Reserved. All content is subject to change without notice.

System Requirements

iSys Label ensures superior quality and resolution, as well as greater consistency and repeatability for the EDGE 850, designed and engineered to operate with qualified consumables and the Certified Media Library. iSys Label is not responsible for damage or consequences arising from the use of non-certified media or consumables.

CPU: Intel Xeon E5-1650 @ 3.20GHz, or Intel Core i7-3930K @ 3.20GHz
RAM: 12GB RAM (minimum)
HDD: 150GB SATA 10K or 15K RPM
OS: Windows 7 Professional, or Ultimate 64-bit

© 2013 Copyright, iSys Label. All rights reserved. All content is subject to change without notice.



iSys Label
911-28th St. NE
Calgary, AB Canada
T2A 7X1

T: 403-204-5200 F: 403-204-1971
sales@isys-label.com | www.isys-label.com

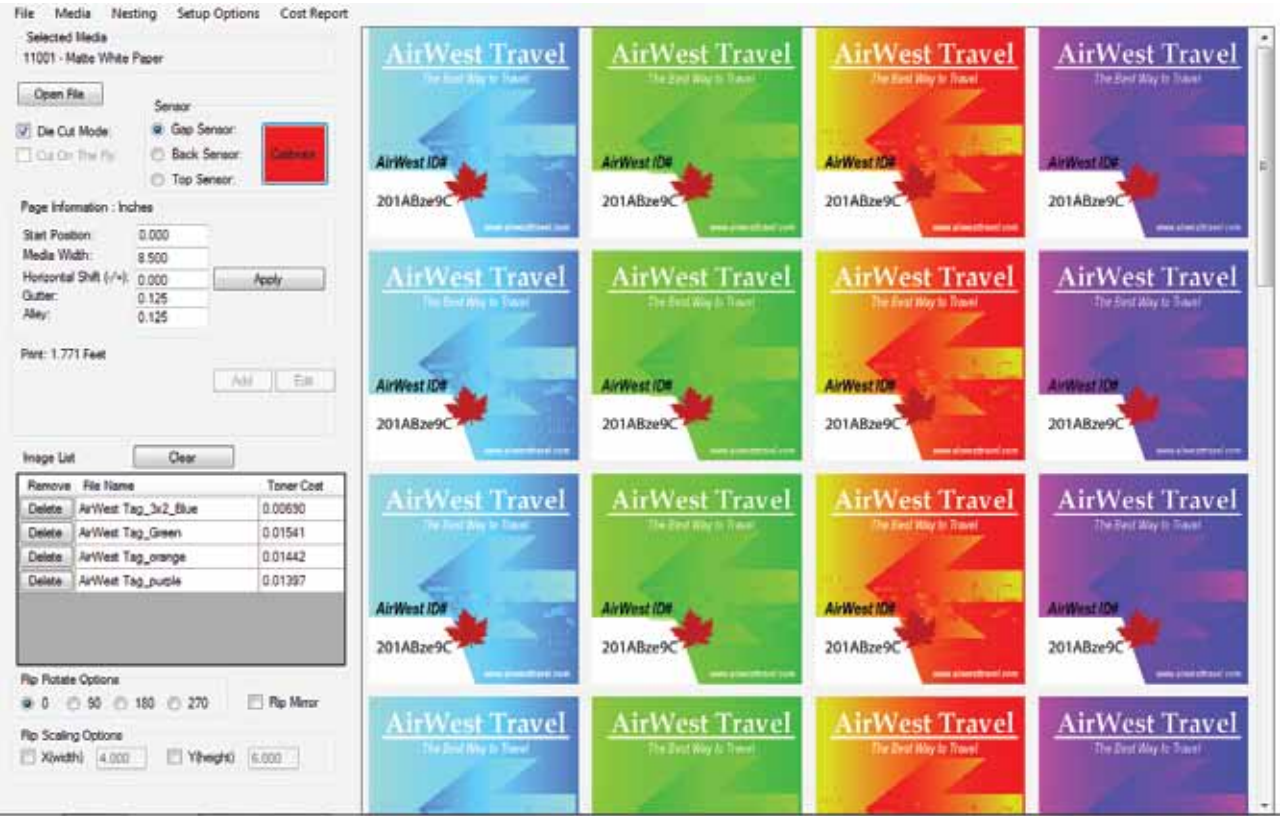


EDGE 850



EDGE2Print Software & Certified Media Library

iSys's EDGE2Print label software is a full featured, easy-to-use software package that was developed exclusively for the EDGE 850 short run label printer. The drag and drop, snap to grid layout allows for quick imposition of PDF graphics and combined with the quick changeover technology, makes light work out of label production.



- User defined layouts and media management
- Conventional or die-cut media layout
- RIP rotation, scaling, mirror imaging and nesting capabilities
- Toner coverage and cost calculator, per label and per job
- Multi-up costing for different graphics on the same layout
- Edge to edge printing capabilities on die cut rolls
- Full color management Harlequin RIP
- iSys Certified Media Library includes a wide variety of Certified substrates under the categories: paper, plastic, foil, fabric, textured and tagstock

iSys Variable Data Printing (iVDP) *Optional

Compatible with the EDGE 850 digital label printer, iVDP will allow users to expand their print capabilities and further meet the customer's needs for mass customization in their design and message. The built-in Pantone library and advanced color management tools allow for clean and crisp high resolution and eliminates the need to pre-print labels. Delivering 1200 x 600 dpi resolution and print speeds



- Easy to use WYSIWYG design interface
- Over 400 preformatted barcodes
- Advanced serialization
- Numerous graphic formats
- Horizontal and vertical sequential layout
- CSV file data importing

Bring Label Printing To Your Desktop

The Power To Do More In Less Time - A unique digital press solution for short run label production

The EDGE 850 is a digital label press solution printing at speeds up to 9.14 meters/minute (30 feet /min) for short run label production on a variety of die-cut, kiss-cut or roll substrates. This innovative label press is easy to operate, so you can say goodbye to ordering huge quantities of pre-printed labels. Designed for in-house production of labels, users will be capable of printing 2000 labels in less than 20 minutes and have the finished roll ready for immediate application.



Printer Output

- CMYK toner based
- 1200 x 600 DPI at 160 LPI
- Photo image quality
- Print speeds up to 9.14 m/min
- Output rewinder
- Runs media widths from 6-8.5 inches wide

